

NAME: _____

Score _____/42

Music Theory Test Unit 2

Answer the following questions:

How many quarter notes = 1 whole note? _____

How many eighth notes = 1 half note? _____

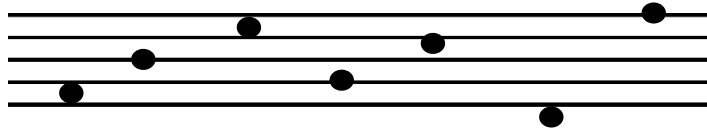
How many quarter notes = 1 half notes? _____

How many half notes = 1 whole note? _____

Name the notes shown below.



Draw stems and flags on the note heads below.



Draw the matching rest sign for each note shown below. Then on the bottom line tell it's duration (length).

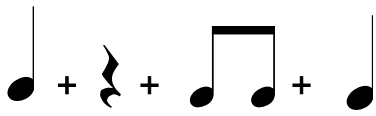
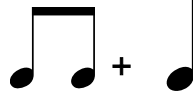
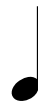


Rest: _____

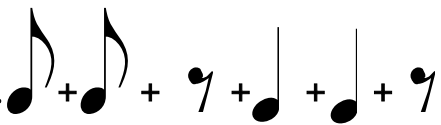

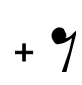
Duration: _____

TURN OVER

Fill in the duration (beats) of each symbol below:

1.  +  + 
_ _ _ _ _ = _ total beats

3.  +  + 
_ _ _ _ _ = _ total beats

2.  +  + 
_ _ _ _ _ = _ total beats