

NAME: \_\_\_\_\_

Score \_\_\_\_/27

## Music Theory Test Unit 1

(7 pts) 1. The musical alphabet is made up of what letters?  A B C D E F G

(2 pts) 2. This symbol  is called a  treble clef  or a  G clef .

(3 pts) 3. It is usually used for  women's  voices,  high  instruments and  right  hand of the piano.

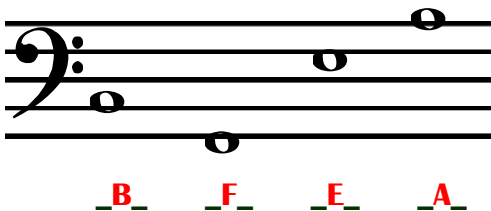
(2 pts) 4. Write the definition of a staff.  
 a group of five lines and four equal spaces, upon which music is written

(2 pts) 5. This symbol  is called a  bass clef  or a  F clef .

(3 pts) 6. It is usually used for  men's  voices ,  low  instruments and  left  hand of the piano.

Write the letter names for each note on the line below it.

(4 pts)



(4 pts)

