

NAME: _____

Score: _____ / 11

2 Minute Music Theory

3.1

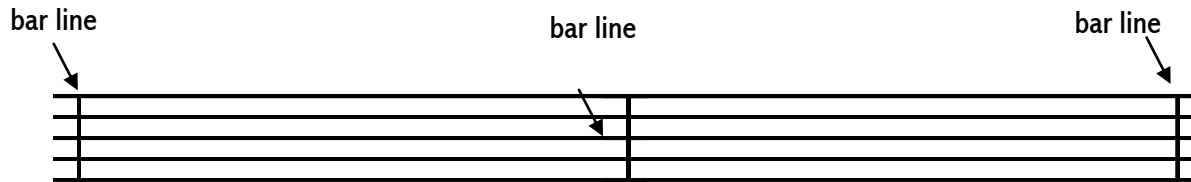
"Everyone has his burden. What counts is how you carry it."

Merle Miller

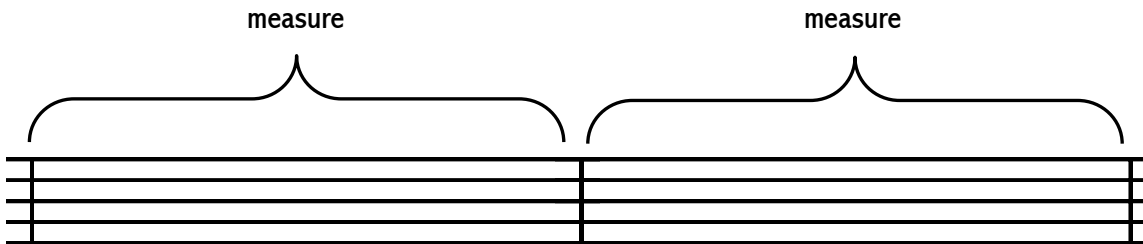
Remember: The **staff** is a group of five lines and four spaces upon which music is written.

There are a few other parts of the staff that you should also know.

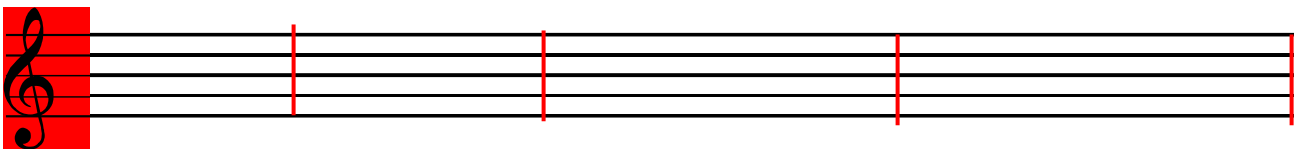
The staff is divided into measures by **bar lines**.



The space between two bar lines is a **measure**.



Draw a treble clef at the beginning of the staff, then divide the staff into 4 measures. Be sure the bar lines do not hang over the top or bottom of the staff. **One point each.**



Two points each

Write the definition of staff. **_____group of five lines and four spaces upon which music is written _____**

Write the definition of bar line. **_____the staff is divided by bar lines _____**

Write the definition of measure. **_____the space between two bar lines _____**