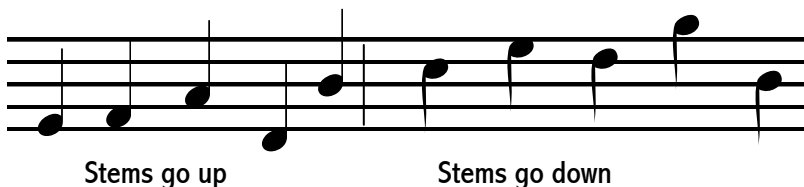


NAME: _____

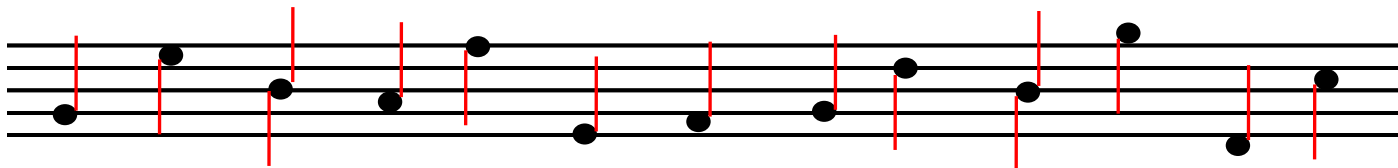
Score ____/28

2 Minute Music Theory 2.4 Extra Practice

- When the note head is below the 3rd line of the staff, the stem is placed on the right of the head and goes up.
- When the note head is on the 3rd line the stem may go up or down depending on the notes surrounding it.
- When the note head is above the 3rd line of the staff, the stem is placed on the left of the head and goes down.



Place stems on the note heads below. Be sure that the stem is on the correct side of the head and going the right direction. *1 point each*



Whether the stem is up or down the flag always goes on the right side of the stem.



Draw stems and flags on the note heads below.

Draw stems and beams on the note heads below.

1 point for each stem

