

NAME: \_\_\_\_\_

Score \_\_\_\_/21

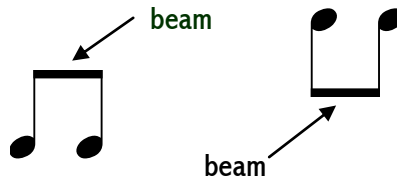
### 2 Minute Music Theory

2.4

*Ability is what you're capable of doing. Motivation determines what you do. Attitude determines how well you do it.*

*Lou Holtz*

The flag is often replaced with a beam to attach two eighth notes. They are still counted as two individual eighth notes.



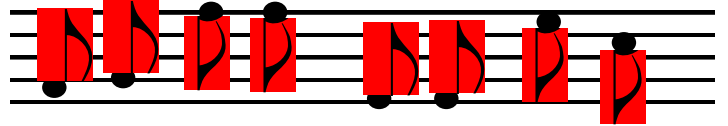
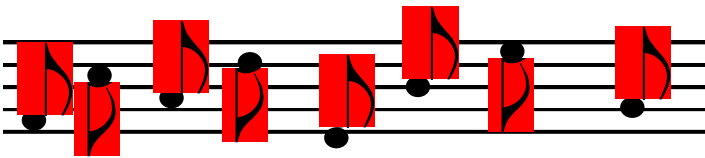
Whether the stem is up or down the flag always goes on the right side of the stem.



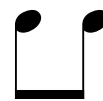
Draw stems and flags on the note heads below.

Draw stems and beams on the note heads below.

*1 Point each*



Name the notes shown below.



\_\_quarter\_\_

\_\_eighth\_\_

\_\_half\_\_

\_\_2 eighths\_\_

\_\_whole\_\_