

NAME: _____

Score ____/16

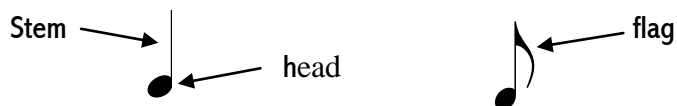
2 Minute Music Theory

2.3

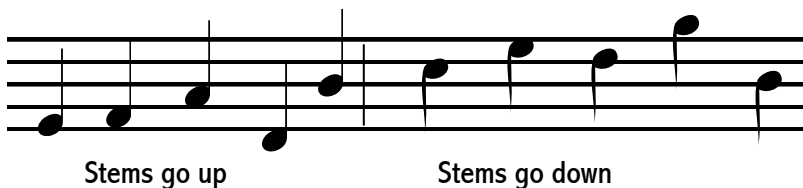
Ability is what you're capable of doing. Motivation determines what you do. Attitude determines how well you do it.

Lou Holtz

A note is made up of three different parts: the stem, the note head and the flag. Not all notes have all of the parts. A whole note only has a head. And half notes and quarter notes do not have a flag

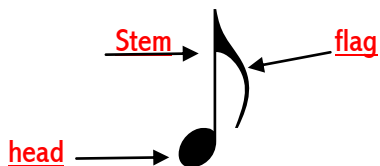


When the note head is below the 3rd line of the staff, the stem is placed on the right of the head and goes up. When the note head is on the 3rd line the stem may go up or down depending on the notes surrounding it.



When the note head is above the 3rd line of the staff, the stem is placed on the left of the head and goes down.

Label the parts of the notes: *1 point each*



Place stems on the note heads below. Be sure that the stem is on the correct side of the head and going the right direction. *1 point each*

