

NAME: _____

Score ____/15

2 Minute Music Theory

1.9

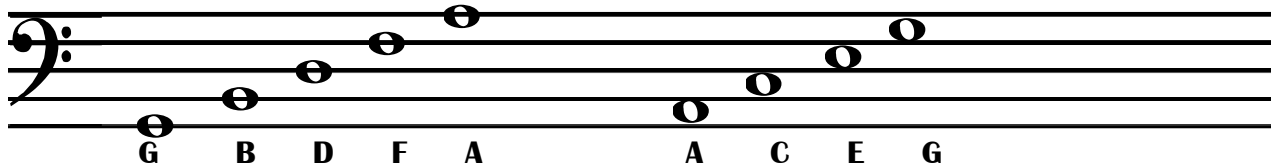
Great things are done by a series of small things brought together.

Vincent van Gogh

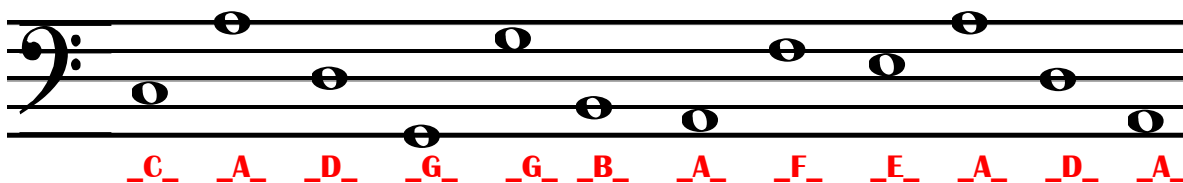
To help you remember the names of the lines of the bass clef you can remember the simple saying “**G**ood **B**oys **D**o **F**ine **A**lways.” Starting at the bottom of the staff and moving toward the top, the lines are **G B D F A**.

To remember the names of the spaces, again starting at the bottom of the staff, just remember the phrase “**A**ll **C**ows **E**at **G**rass,” or “**A**ll **C**ars **E**at **G**as.”

Notice the line and space names have moved and are different from the treble clef.



Write the letter name below each note to match the line or space it is on.



The bass clef is also known as the _F_ clef.

The treble clef is also known as the _G_ clef.

The names of the lines and spaces for the two clefs are _different_. (same, different)