

NAME: _____

Score ____/14

2 Minute Music Theory

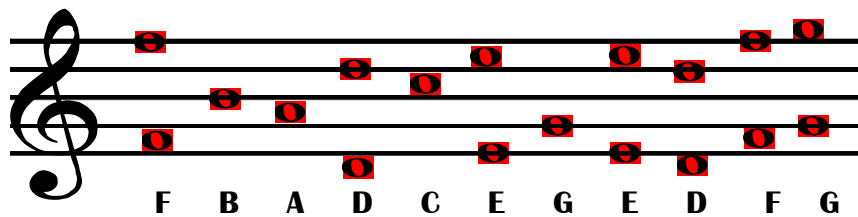
1.7

There might be some people who can stop you temporarily, but you are the only one who can do it permanently.

Anonymous

Place the notes on the staff to match the letter names below. Neatly draw a circle between the lines for the space notes. For the line notes, neatly draw the circle so that the line runs through the center of the circle. **Do not use the same line or space twice.**

Each note is 1 point. Where there is more than one note, students may use either one, but use the opposite line or space on the second instance.



The treble clef is also known as the G clef, because it circles around the second line of the staff, identifying it as G.

Write the definition of a staff. a group of five lines and four equal spaces, upon which music is written (2 points. This does not need to be word for word but should contain: 5 lines, 4 spaces and music written on)