

NAME: _____

Score ____/15

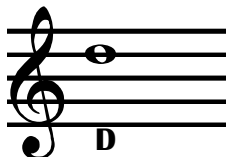
2 Minute Music Theory

1.6

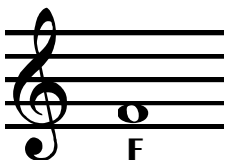
No one can make you feel inferior without your permission.

Eleanor Roosevelt

When placing notes on the staff, if a circle has a line through the middle, it is considered a **line note** and is given the letter name of the line that goes through it.



When the circle is placed completely between two lines, it is considered a **space note** and is given the letter name of the space that it covers.



Write the correct letter name below each note on the treble staff. Use capital letters.

A treble clef staff with five lines. There are 15 notes on the staff. Below each note is a red letter name with a dashed line underneath it. The notes and their names are: E (line 1), B (space 1), E (line 2), F (space 2), F (line 3), C (space 3), G (line 4), F (space 4), A (line 5), D (space 5), B (line 1), G (space 1), E (line 2), D (space 2), C (line 3).