

NAME: _____

Score ____/11

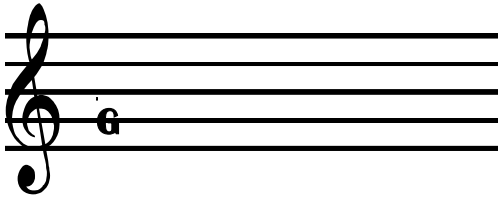
2 Minute Music Theory (Parent Answer Key)

1.3

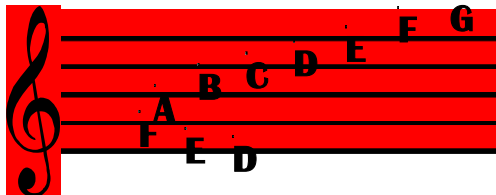
Music may achieve the highest of all missions: she may be a bond between nations, races, and states, who are strangers to one another in many ways; she may unite what is disunited, and bring peace to what is hostile.

Dr. Max Bendiner

The musical alphabet is made up of the first 7 letters of the alphabet. A B C D E F G. The treble clef or G clef tells us where to place the letter G on the staff. Remember: the treble (G) clef circles around the 2nd line of the staff. That means the 2nd line of the staff is G.



Now naming all of the lines and spaces of the staff is simple. Alternate line-space-line-space beginning on G. Go forward through the music alphabet when going up the staff and go backwards through the alphabet when going down.



Write the letter names on the lines and spaces of the staff for the treble (G) clef.

