

NAME: _____

Score ____/4

2 Minute Music Theory (Parent Answer Key)

1.2

Music expresses that which cannot be said and on which it is impossible to be silent.

Victor Hugo

The **TREBLE CLEF** (or **G CLEF**) is a symbol which helps identify pitches on the staff. It is usually used for women's voices, high instruments, and the right hand of the piano.



To draw a treble clef:

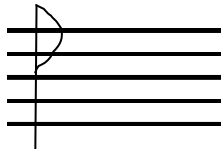
1. Start below the staff.



2. Draw a line above the staff.



3. Draw a loop like the letter P around the 4th line.



4. Circle around the 2nd line of the staff.
This marks the 2nd line as G.



Practice drawing four treble clefs below:

