

NAME: \_\_\_\_\_

Score \_\_\_\_/27

## 2 Minute Music Theory

1.13

*It is our attitude at the beginning of a difficult task which, more than anything else, will affect it's successful outcome.*

*William James*

### Unit 1 Review

(2 pnts) Write the definition of a staff.

\_\_\_\_\_ a group of five lines and four equal spaces, upon which music is written \_\_\_\_\_  
\_\_\_\_\_



(2 pnts) This symbol is called a treble clef or a G clef.

(3 pnts) It is usually used for women's voices, high instruments and right hand of the piano.

(7 pnts) The musical alphabet is made up of what letters? A B C D E F G

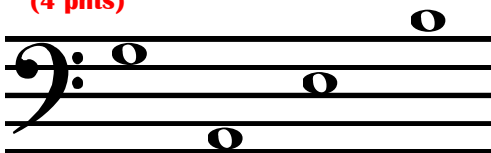


(2 pnts) This symbol is called a bass clef or a F clef.

(3 pnts) It is usually used for men's voices, low instruments and left hand of the piano.

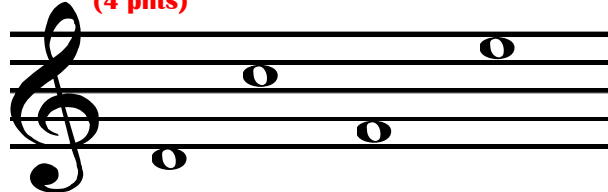
Write the letter names for each note on the line below it.

(4 pnts)



\_G\_ \_A\_ \_E\_ \_B\_

(4 pnts)



\_D\_ \_C\_ \_F\_ \_E\_